



# ADL120 ADL130

## Quick Start Guide

Version 1.10

29.06.2015

For a more detailed description please  
Consult the user manual.

## 1 General Description

This guide helps shows you how to do the first weather download with your ADL120. For a more detailed description please consult the full user manual.

## 2 The Iridium satellite service

Before you can use the ADL120 or ADL130 you have to subscribe to one of our Iridium satellite service plans. Please login to the ADL portal to order the different service plans:

<https://www.ing-golze.de/login.jsp>

If you have no login yet please contact us by email at [adl@ing-golze.de](mailto:adl@ing-golze.de).

## 3 Powering up the ADL120

The easiest way to power up the ADL120 is connecting it to a 12-28 Volt cigarette lighter sockets with the supplied cable. For a first test experience has shown that you can get good results by parking your car on a parking lot which a good view to the sky and powering the ADL120 using the cigarette lighter socket of your car.

**If using the cigarette lighter socket, please make sure you have a continuous power supply. We had reports of loose or broken sockets causing the ADL120 to reboot from time to time.**

## 4 Powering up the ADL130

Make sure the ADL130 is charged then put the power switch on the "On" position. The green light net to the switch should illuminate.

## 5 The Iridium antenna



Figure 1 The Iridium antenna

Connect the supplied Iridium antenna to the ADL120/130. Place the antenna on the glareshield as far forward as possible giving it a good view to the sky.

## 6 Connecting your iPad/iPhone/Android device to the ADL120/130

After powering up the ADL device you have to connect your portable device to the WI-FI access point provided by the ADL device. Go to the setting screen of your device. We show this step for the Apple iPad but other devices will work in a similar way. Choose “Wi-Fi” on the left side. Then on the right side you will see the network “ADLConnect”. Choose this network and make sure the iPad really connects to the ADLConnect wireless network.



Figure 2 iPad Wi-Fi settings

## 7 Installing the ADLconnect App

Before you can start to use the ADL devices with your mobile device, you have to install the ADLConnect iPad App. On Apple devices open the app store and search for “ADLConnect” and install the free app. On Android devices please open the Google play store and also search for “ADLConnect”.

## 8 Starting the ADLConnect app

Start the ADLConnect app. The top status bar will indicate if the app is connected to your ADL device. When connected the Iridium and GPS signal quality will be displayed in the top left corner.

If the app displays “Internet mode” in the top status bar it is not properly connected to the ADL120/130. Please check the WiFi settings.

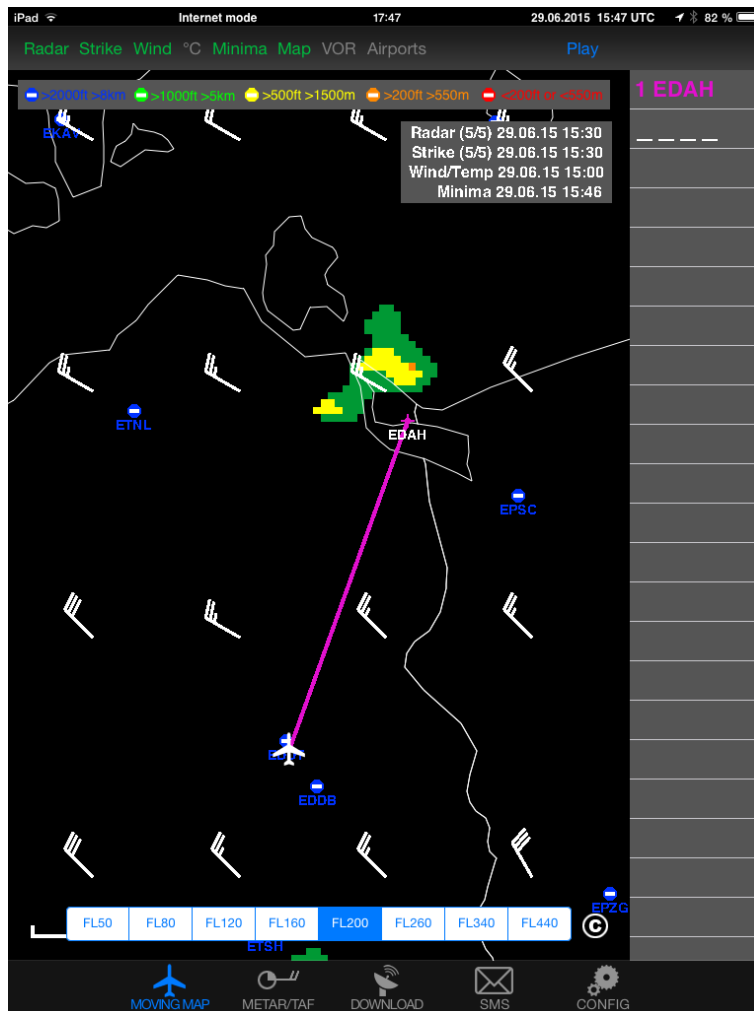


Figure 3 iPad ADLConnect user interface

## 9 Entering your login from Deutscher Wetterdienst

At the top part of the Config page you have to enter your login from Deutscher Wetterdienst. For details on how to get these please refer to the separate manual “DWD Subscription Guide” available on <http://www.ing-golze.de> in the “Support” section.

Please note in previous versions the ADLConnect app asked for the so called FTP login from Deutscher Wetterdienst. This login is no longer required. **Only the login for [www.flugwetter.de](http://www.flugwetter.de) is required.**

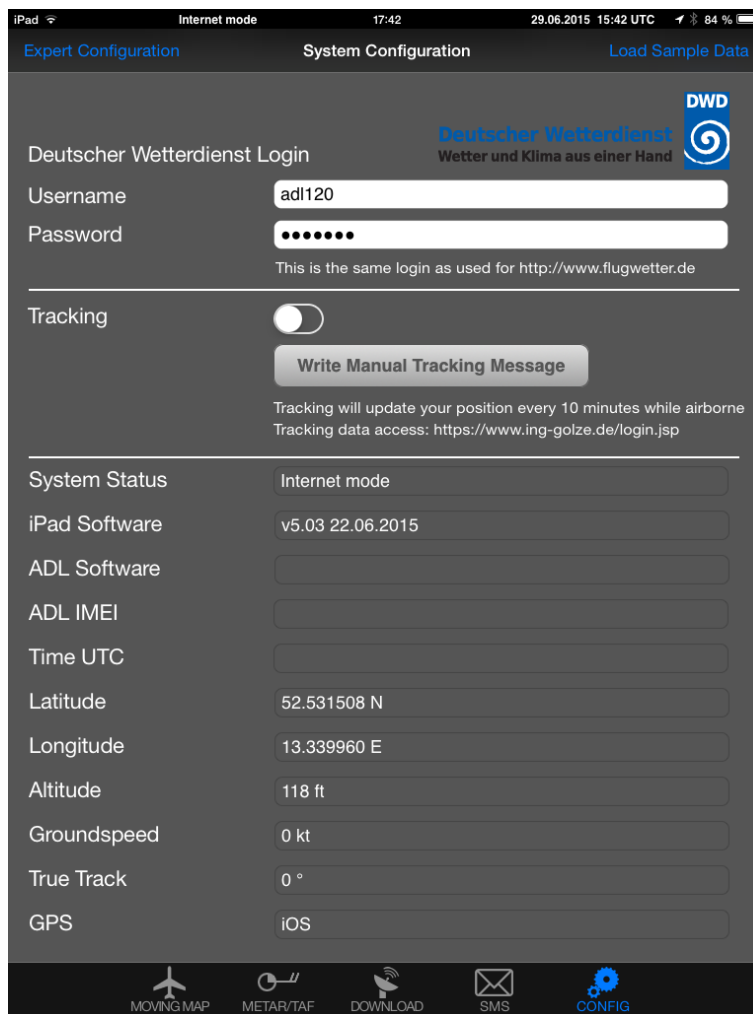


Figure 4 Entering the DWD login on the Config page of the iPad app

## 10 Your first weather download

Go to the Download page. Select Radar: FPL MQ, Strike: FPL, Wind/°C: FPL, Minima: FPL and enter the ICAO code of an international airport below (for example EDDB).

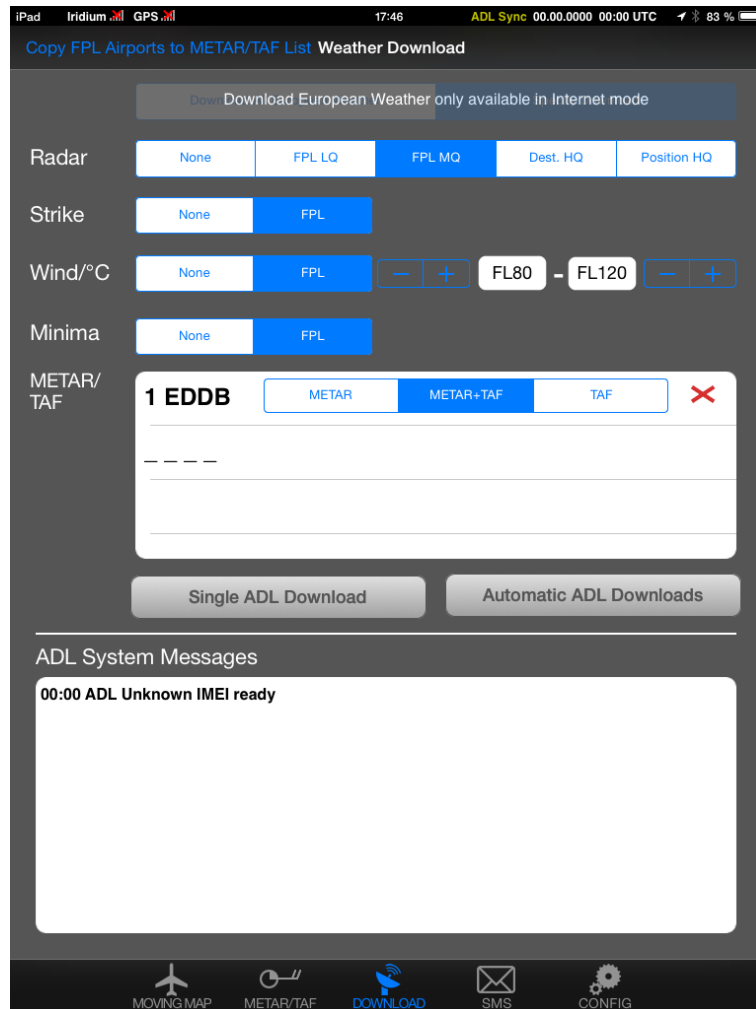


Figure 5 SAT Page

Below press the button "Start ADL Download" and confirm you want to start the download. You can see the status messages of the ADL device below. If you have good satellite reception and your DWD login is correct you will soon have downloaded the weather data. Finally go to the MOVING MAP and METAR/TAF page, where you will find your downloaded weather information.

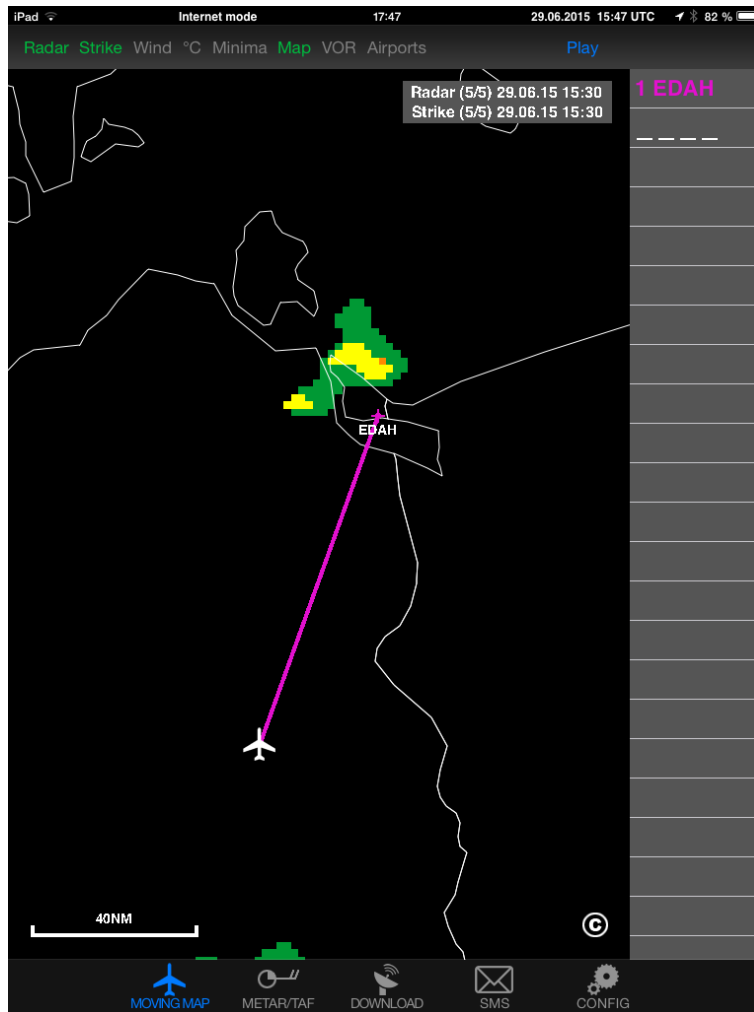


Figure 6 Latest radar information shown on the moving map.

For a more detailed description please consult the user manual which can be downloaded from the website <http://www.ing-golze.de>

## 11 Contact

Golze Engineering  
 Bredowstr. 29  
 10551 Berlin

<http://www.ing-golze.de>

adl@ing-golze.de  
 +49 30 39805204