



Optimizing iOS WiFi Performance

Applicable to all ADL device variants

Version 2.00

02.07.2026

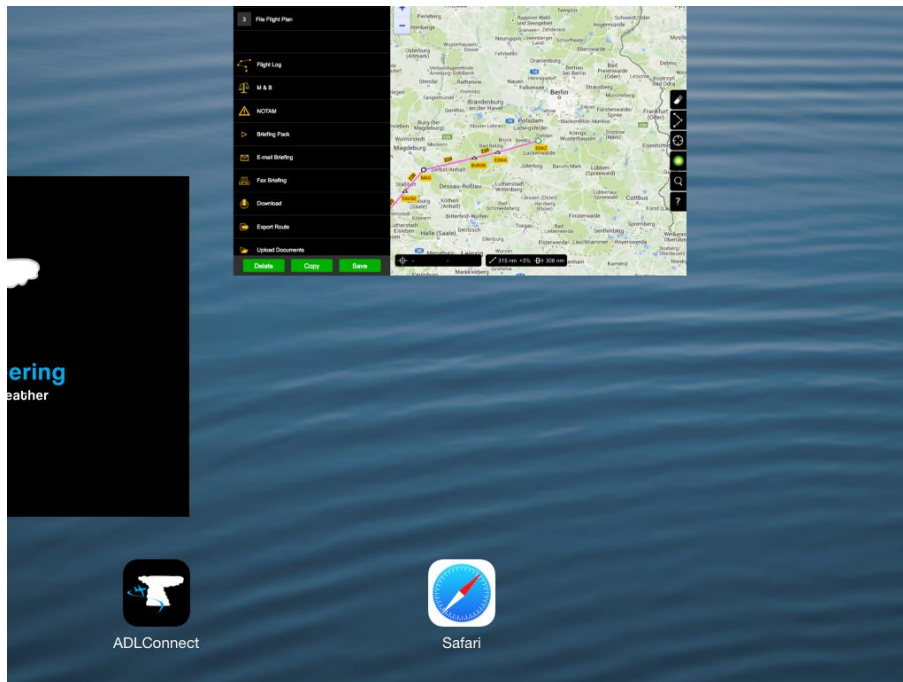
This manual gives some guidance on how to optimize the WiFi performance of your iPhone or iPad when connected to any of the ADL devices

- 1 Terminating Background Apps 3
- 2 ADLConnect App iOS Authorizations 4
- 3 WiFi Settings 5
- 4 Assigning a Manual IP 6
- 5 WiFi – The Wheel Might Turn 7
- 6 Deactivate any Virtual Private Networks (VPN) 8
- 7 Disabling Internet access in SkyDemon 9
- 8 Rebooting iOS Devices Completely 10
- 9 Using Multiple Devices Simultaneously 11
- 10 Overheating issues 12
- 11 Contact 13

1 Terminating Background Apps

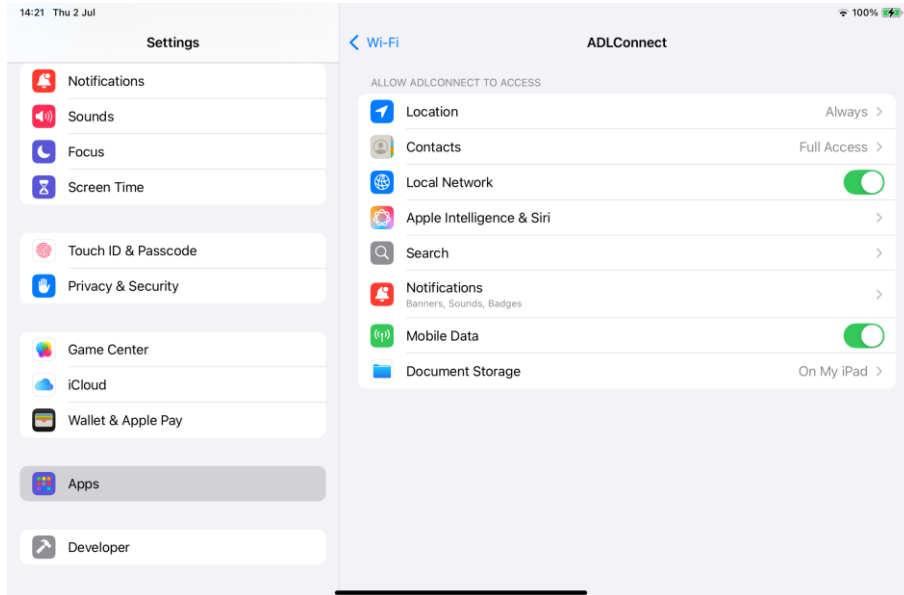
Some apps running in the background will try to transmit data over the ADLConnect WiFi to the Internet. This might congest the WiFi link and reduce the performance of the ADL device. We suggest terminating all background apps which are not required in flight.

In order to close apps, please double press on the “Home” button below the screen, for device with such a button. For other devices without a button, swipe up across the lower border of your screen. Then push up, out of the screen, all apps which are not required. This terminates those app and removes them from the background.



2 ADLConnect App iOS Authorizations

Open the general iOS settings, scroll down on the left side and select “Apps”. Then select “ADLConnect”.

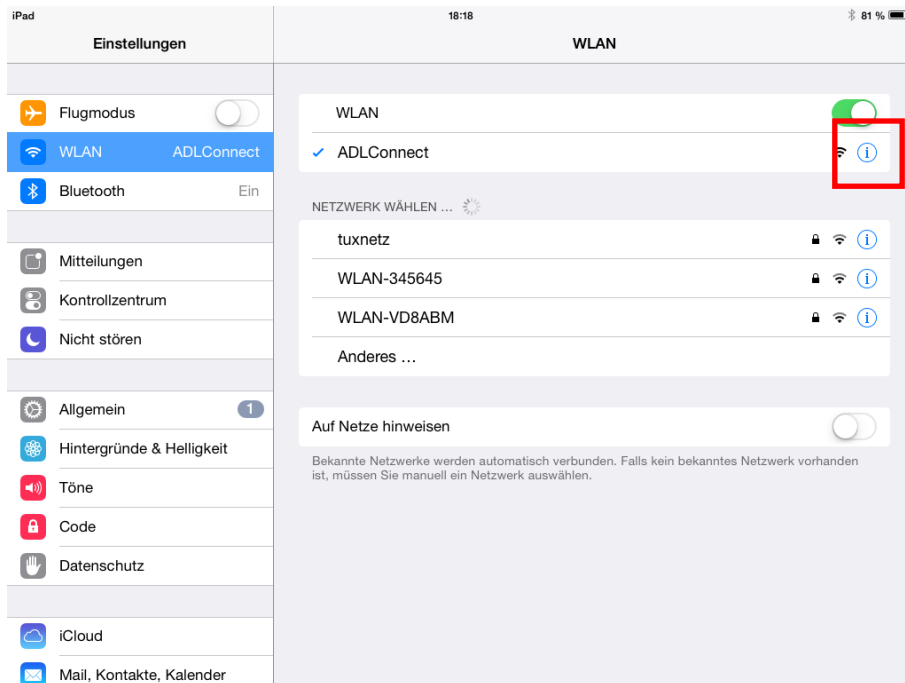


The following authorizations should be granted for best performance:

- Location "Always" authorization to run in the background when in flight and send you notifications.
- “Contacts”, if you would like to use your contacts for the ADLConnect SMS and emails.
- "Local Network" to access the ADL device
- “Notifications” to send you messages once you receive SMS or emails
- “Mobile Data” if ADLConnect should also download weather data over the Internet

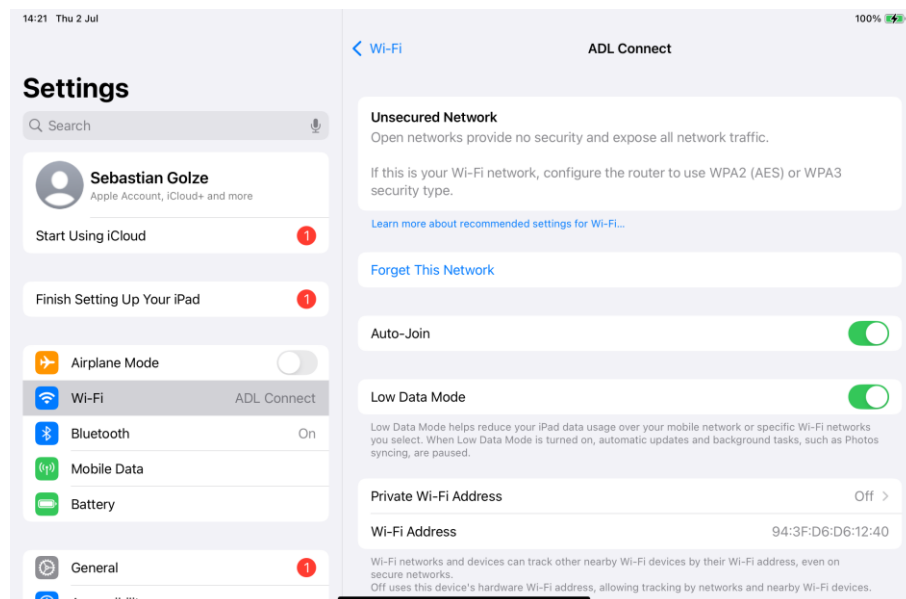
3 WiFi Settings

Open the general iOS WiFi settings and make sure you are connected to the “ADL Connect” network,. Open the network details using the little “i” icon.



In this menu please verify your settings:

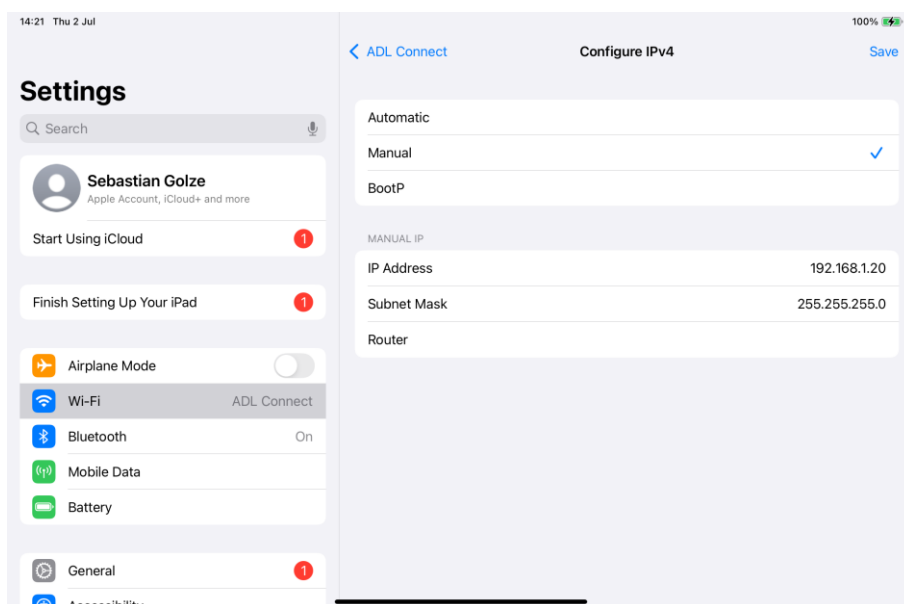
- Auto-Join: On
- Low Data Mode: On
- Private WiFi Addresses: Off



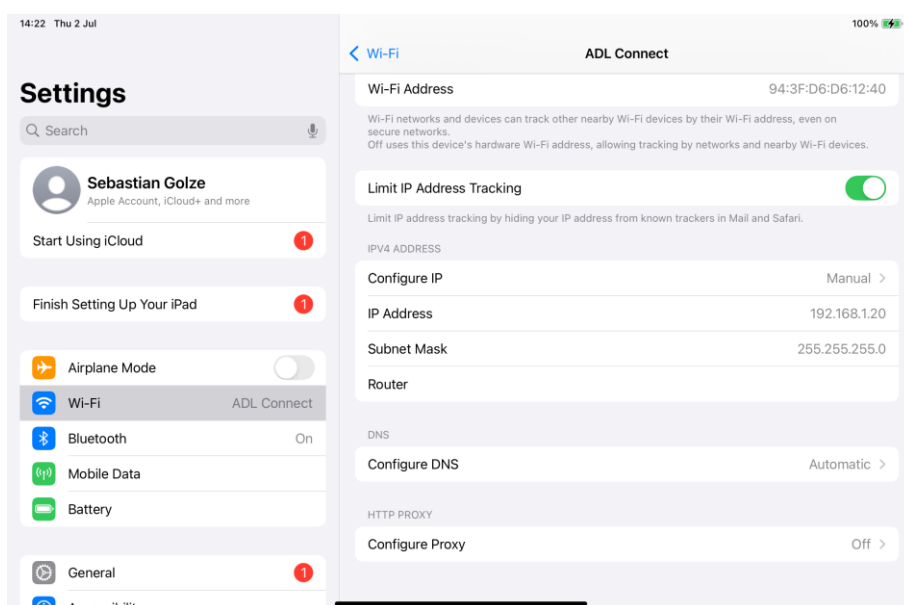
4 Assigning a Manual IP

The connection to the ADL device works best if you assign a manual / fixed IP, instead of letting this happen automatically.

Select the “Configure IP” line. A new sub menu appears. Now select “Manual”. Then enter the IP Address 192.168.1.20 and subnet mask 255.255.255.0 as shown below. Leave the “Router” field empty (important). If you use more than one device (iPad, iPhone etc.) you must count up the 20 for each device. So the second device gets 192.168.1.21 and so on.

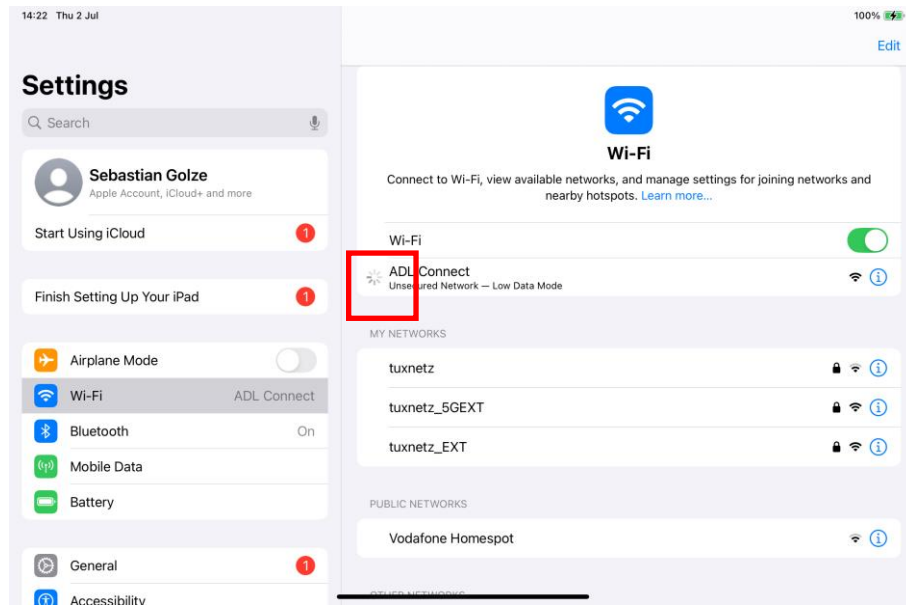


Now press the “Save” button at the right top. This step is crucial, else the iOS will not save your settings. Finally, your main ADLConnect WiFi page should look like this:



5 WiFi – The Wheel Might Turn

In some cases the little wheel as shown below next to the “ADLConnect” network name might not change into a checkmark, but it stays a turning wheel. This does not have to be an error, most of the time the network will work just fine.



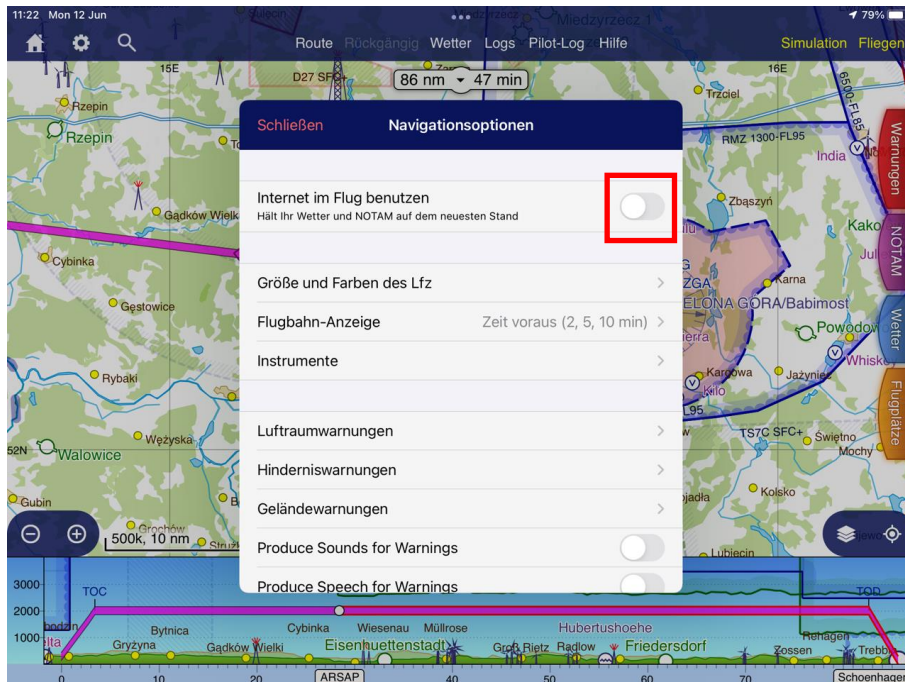
Simply ignore this indication and switch over to the ADLConnect app.

6 Deactivate any Virtual Private Networks (VPN)

If you have configured any VPN service on your iPhone or iPad, make sure it is completely deactivated when using an ADL device to assure the ADLConnect app can properly communicate with the device using WiFi.

7 Disabling Internet access in SkyDemon

Experience has shown that SkyDemon trying to connect to the normal Internet can cause issues with the WiFi link to your ADL device. So it is suggested to disable this feature. Go to Settings - > Navigation Options and then disable the “Use Internet in flight feature” at the top of the list.

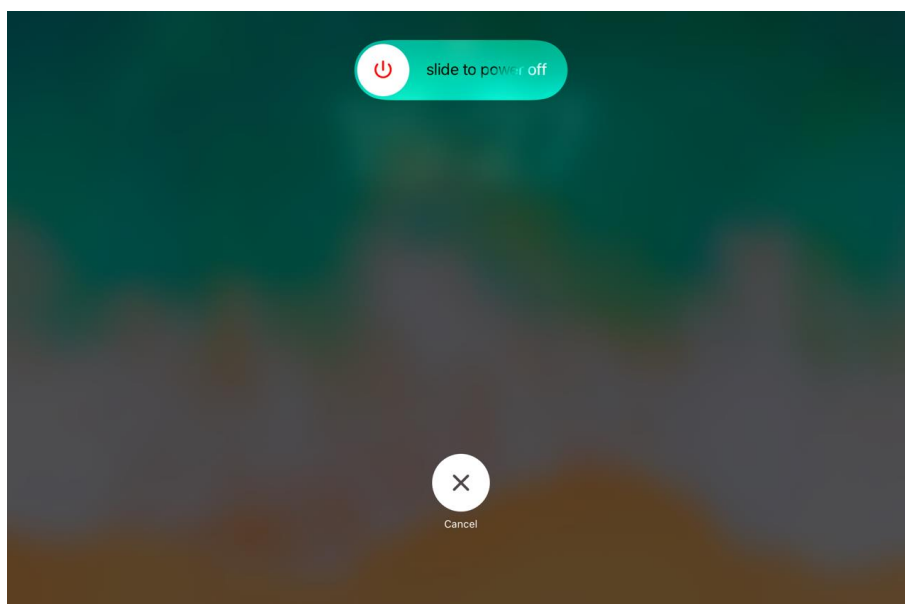


8 Rebooting iOS Devices Completely

In some rare cases the steps shown above are not enough. Then we suggest rebooting your iOS device completely. iOS devices remain on all the time even if you pause them by switching off the screen. So devices running for months at a time are quite common.

To completely reboot your iOS device, the procedure will depend on your device. For older devices with a “Home” button usually pressing the on/off button for a long time will bring up the required menu.

For devices without the home button, shortly pressing volume up, then volume down and then holding the on/off button usually work.



Once it is shut down, you can restart it with the usual On/Off button. It should now do a complete restart, which will take a while booting up the whole system. This process can cure all kinds of software issues and will terminate all apps running in the background at the same time.

9 Using Multiple Devices Simultaneously

The ADL110(B), ADL120 and ADL130 can only serve one instance of the ADLConnect app at a time. The app on other iOS devices will not be able to connect until the app is closed on the first device. Please do not confuse this behavior with any WiFi issues as the symptoms could look similar on a second device trying to connect.

The ADL140, ADL150(B), ADL160, ADL165, ADL170, ADL180(B), ADL190 and ADL200 can serve multiple instances of the ADLConnect app at the same time. So you can use ADLConnect on multiple devices at the same time looking at the same weather data etc.

But in case of problems, we recommend that you only connect one device at a time. Only once that works properly, start using the second device at the same time.

10 Overheating issues

Experience has shown that once an ADL device overheats badly, often WiFi errors will be the first symptoms. Please do not place any of the black installed ADL devices into direct sunlight.

11 Contact

Golze Engineering
Dr. Sebastian Golze
Bredowstr. 29
10551 Berlin

<https://www.golze.tech>

adl@ing-golze.de
+49 30 39805204