



Displaying ADL Weather in SkyDemon ADL140, ADL150(B), ADL190, ADL200

Version 1.00

01.11.2019

1 Version History

Version 1.00 published 01.11.2019

2 Page Index

This manual contains numbered pages 1 to 8.

3 Emergency procedures

If you suspect any malfunction of the ADL140/150(B)/190/200 or interference with other aircraft systems, deactivate the device by pulling / deactivating the aircraft circuit breaker for the device or pulling the cigarette lighter plug whichever is applicable. Do not reactivate the device until the problem has been investigated and resolved on the ground.

In case of a generator failure or similar situation requiring electric load shedding, deactivate the ADL190/200 by pulling / deactivating the aircraft circuit breaker for the device or pulling the cigarette lighter plug whichever is applicable.

4 AHRS Warning

The ADL190/200 comes with a non certified experimental AHRS. THIS AHRS IS NOT DESIGNED OR SUITABLE TO CONDUCT ANY IFR/IMC FLIGHT. IT IS DESIGNED FOR ENTERTAINMENT PURPOSES ONLY, DRIVING SYNTHETIC VISION IN SUITABLE iPad APPS AND SIMILAR.

DO NEVER FLY THE AIRCRAFT BASED ON THE ADL190/200 AHRS! USE ONLY OTHER CERTIFIED INSTRUMENTS FOR THIS TASK.

5 ADS-B Traffic Warning

The ADL190/200 comes with a non certified 1090 MHz ADS-B receiver. Not all aircraft are broadcasting 1090 MHz ADS-B and the non certified nature of the ADL200 means that due to antenna installation etc. it could even miss signals from aircraft broadcasting ADS-B. **NEVER RELY ON THE ADL200 FOR COLLISION AVOIDANCE!**

6 Weather Warning

While we do everything we can to ensure quality the ADL190/200 devices might not work at any time. In addition the system may display false information. **NEVER PENETRATE WEATHER BASED ON THE INFORMATION PROVIDED BY THE ADL200** This information is for situational awareness only. The device features a GPS moving map system. This system is designed to display the aircraft position in relation to the weather data. **THE ADL140/150(B)/190/200 IS NOT SUITABLE AS A MEANS OF PRIMARY NAVIGATION.** Especially the build in database is not updated in a regular aviation cycle. It is also not maintained to the standards of certified aviation databases

7 General Description

The ADL devices ADL140, ADL150(B), ADL190 and ADL200 are capable of broadcasting weather, traffic and AHRS information over the local WiFi to connected devices. Besides our own ADLConnect app other Apps can pick up the signal and display the data. Please install the latest firmware on your ADL device (version 8.50 at the date of this document) as previous versions might be missing features. This manual explains how to display this data in popular third party apps.

8 Weather Download procedure

Besides Sky-Map all other apps will only display the downloaded weather data. This means that you have to program or import a route to the ADLConnect app and start a single download or automatic downloads from within the ADLConnect app. Only thereafter you can switch over to other apps and they will start to pick up the received weather information.

PLEASE NOTE THE GDL90 WEATHER TRANSFER FOR OTHER APPS ONLY WORKS FOR WEATHER DOWNLOADED BY THE ADL DEVICE ITSELF. INTERNET DOWNLOADS FROM THE APP DO NOT WORK.

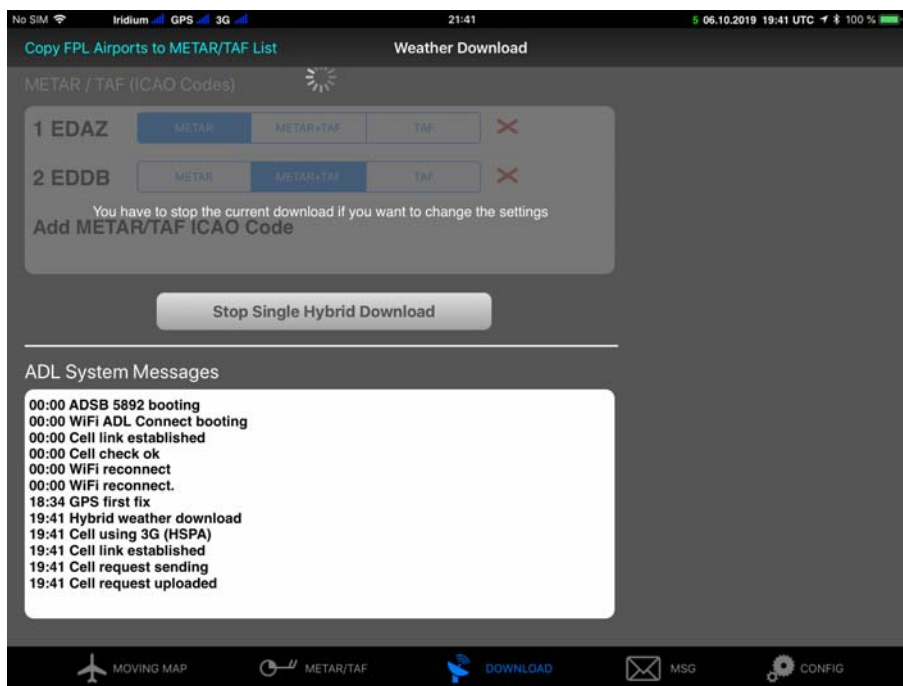


Figure 1 ADLConnect Download Procedure



Figure 2 ADLConnect With Current Weather Download

9 Displaying ADL Weather in SkyDemon

As described above download the latest weather using the ADL device. Then switch over to the SkyDemon app. If this is the first time displaying the ADL weather on SkyDemon please select the little wheel as shown below. Then select "Third-Party Devices"

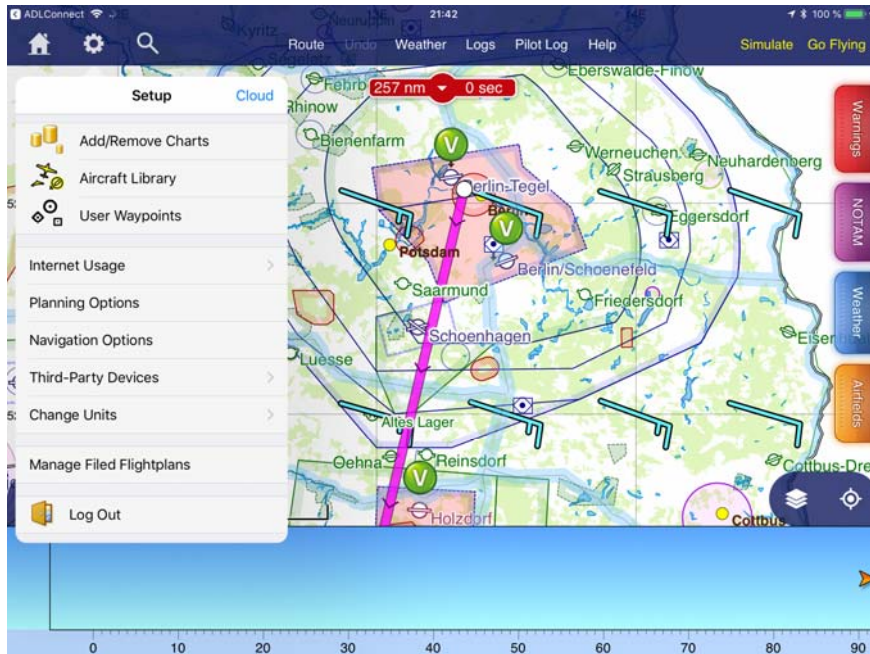


Figure 3 Select "Third-Party Devices" © SkyDemon

In the following menu make sure the "GDL-90 Compatible Device" option is activated. This is a one time configuration only.

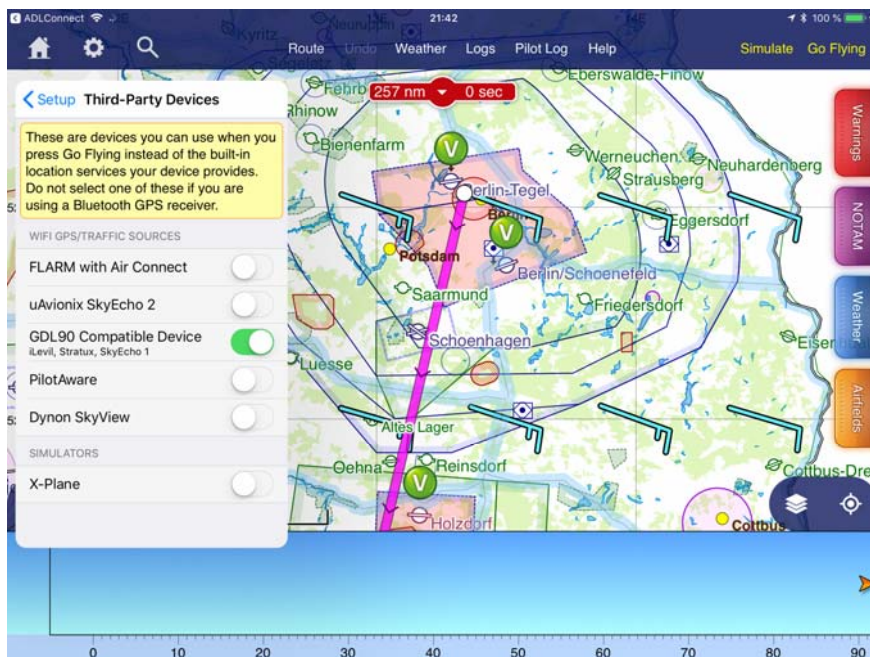


Figure 4 Activate "GDL-90 Compatible Devices" © SkyDemon

On every start of the SkyDemon app you can now press the "Go Flying" button. SkyDemon will offer you the "Use Location Services" and "Use GDL90 Compatible Device" options. The first will use your iPad internal GPS and not display and ADL weather. The second option will use the ADL as the GPS position source and also pick up the traffic and weather from the ADL device if available.

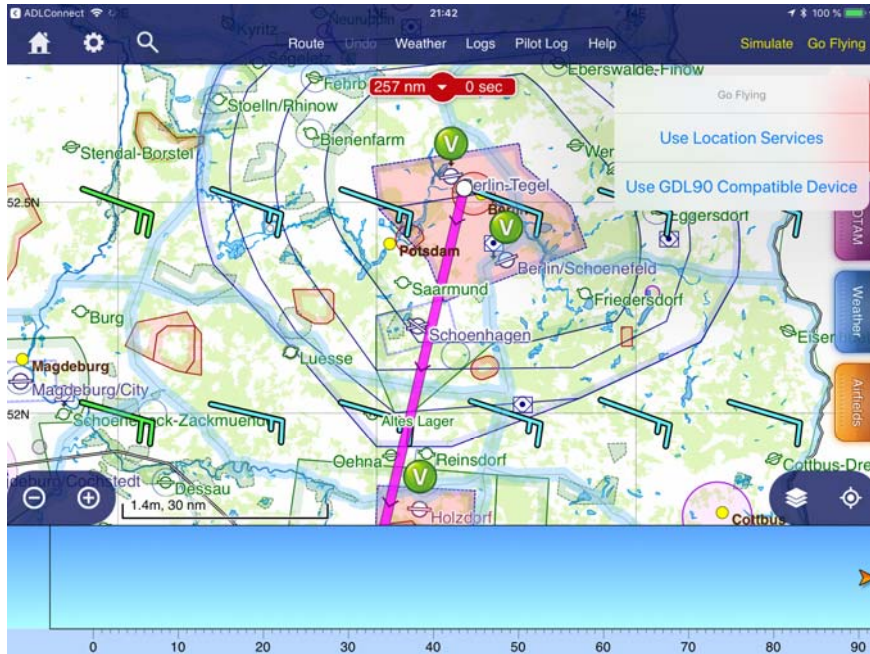


Figure 5 Select "Use GDL90 Compatible Device" © SkyDemon

The following screenshot shows ADL traffic and ADL radar data displayed on the SkyDemon map. If you do not see and radar data make sure the Rainfall layer is activated. Therefore press the SkyDemon Logo, select "Weather" and make sure the Rainfall button is activated.

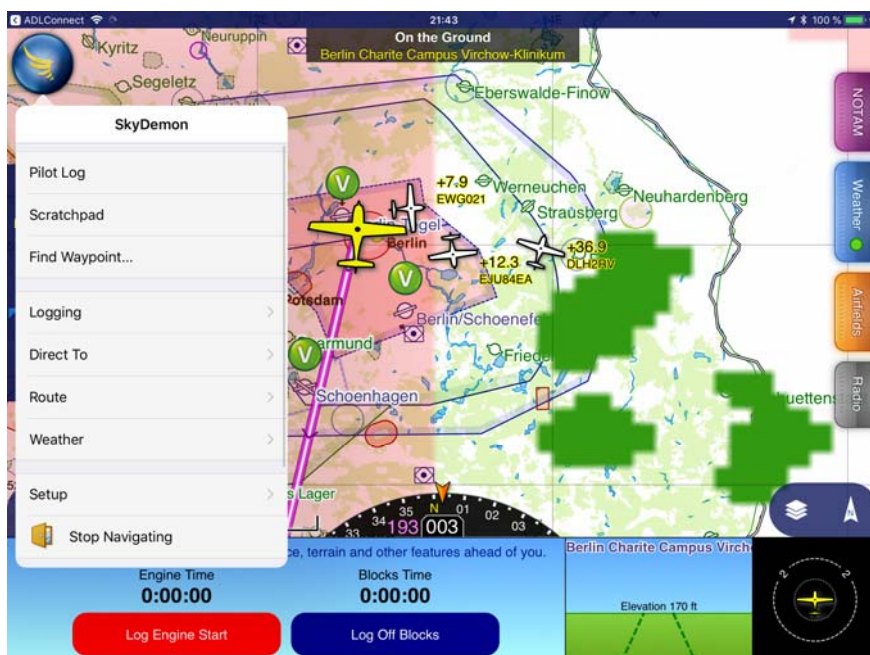


Figure 6 Select "Weather" © SkyDemon

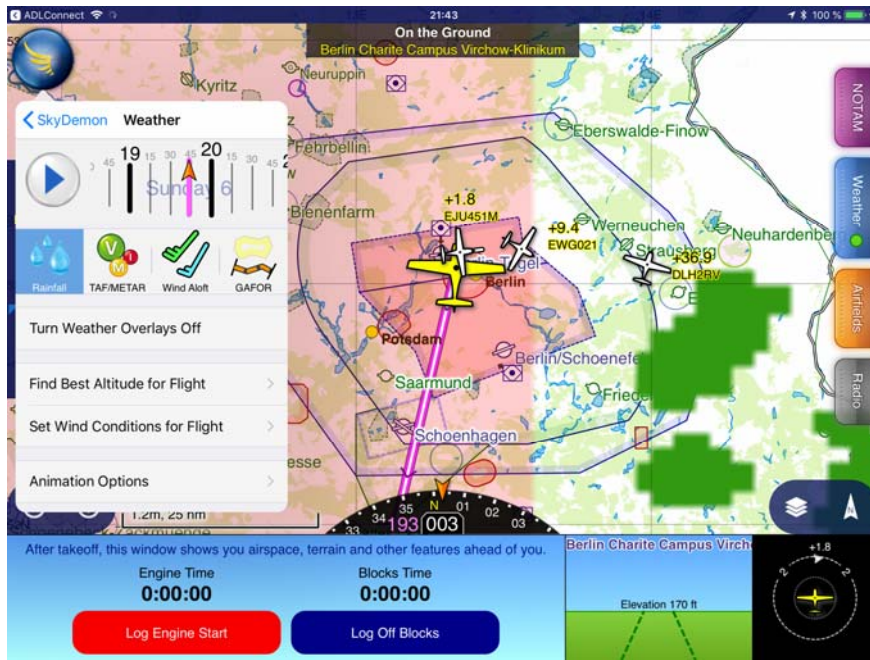


Figure 7 Select "Rainfall" © SkyDemon

The screenshots below shows the radar data displayed in SkyDemon. Please note that the red area is data without any current radar data downloaded. Also note the METAR and TAF information also transmitted by the ADL device displayed on the right side.

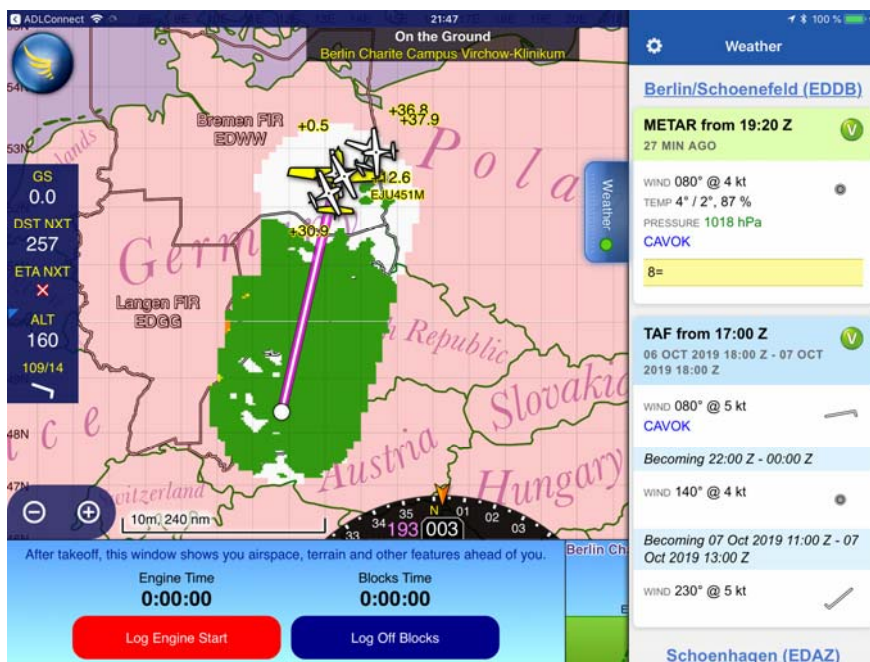


Figure 8 SkyDemon displaying radar and METAR/TAF © SkyDemon

10 Contact

Golze Engineering
Bredowstr. 29
10551 Berlin

<http://www.ing-golze.de>

mail@ing-golze.de
+49 30 39805204